

BROADVIEW PLACE in Boise

Enjoy Broadview Place, a multi-family community located in the highly sought-after West Bench neighborhood in Boise, Idaho. The neighborhood features 3-story townhomes with a fenced in dog park and a shaded gazebo. Situated on the corner of Ustick Road and Milwaukee Street, the homes are 5 miles to downtown Boise, and 7 miles to downtown Meridian. Within five minutes, you can enjoy shopping and dining at the Boise Towne Square Mall.



Featured Plan

The Targhee (2,278 Sq Ft, 3-4 BR/2.5-3.5 BA, 3-Story)



Directions to Community:

Take exit 1B from Westbound 184, Right on N Cole Road, Left onto W Northview Street, Right on N Milwaukee.



Closest Sales Center: Charlesworth

6106 S Carlburg Ave, Boise, ID

BROADVIEW PLACE



Features

New 3-Story Townhomes in Boise
2,278+ Square Feet
3-4 Bedrooms | 2.5-3.5 Bathrooms



Amenities

Gazebo
Fenced Dog Park



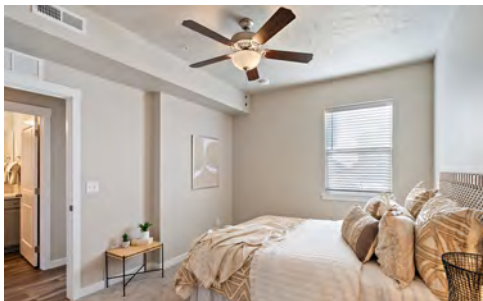
Schools

Boise School District
Morley Nelson Elementary School
Fairmont Middle School
Capital High School



HOA Dues

Set Up Fee: \$250
Annual Dues: \$1280
Transfer Fee: \$250



Areas of Interest



Boise Airport: Less than 15 Minutes
Boise State University: Less than 15 Minutes
Boise Towne Square: Less than 5 minutes

Hospitals & Urgent Care Centers

St. Luke's Hospital (Less than 30 Minutes)
St. Alphonsus Hospital (Approximately 10 Minutes)
Primary Health (Approximately 7 Minutes)

Shopping

Grocery and Retail Stores (2-10 Minutes) including Walmart, Target, Winco, Home Depot and more.

Dining

Local restaurants (3-10 minutes) including Romio's Greek and Italian Restaurant, Island Sushi and Ramen and Idaho Pizza Company.

